

Head Office:
Dixon Kelley Estate Agents
1 Penn Court
Station Road, West Moors
Dorset. BH22 0JJ

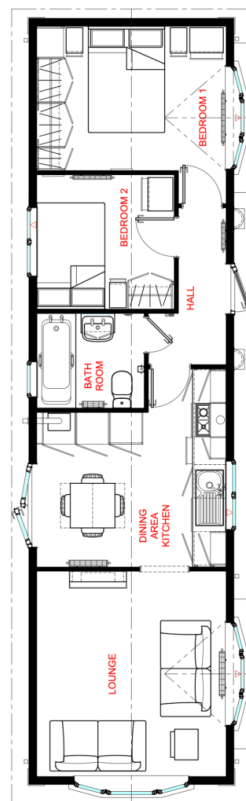
DORSET PARK HOMES

DRAFT

www.dorsetparkhomes.com

Telephone: 01202 877511

82 Pinehurst Park, West Moors, Dorset. BH22 0BP



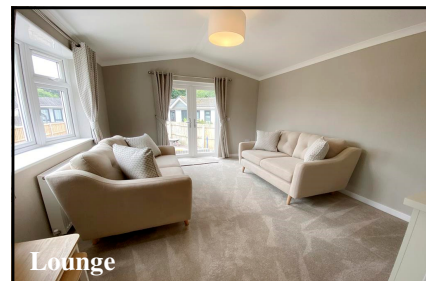
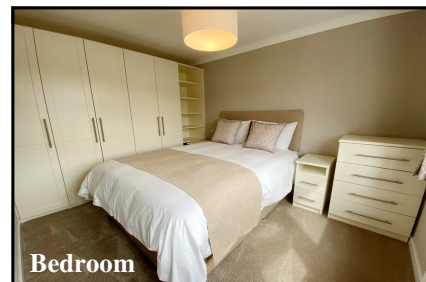
This drawing has been prepared for diagrammatic purpose only. Not to scale.

2 Bedroom Park Home approx 46' x 14'

Accommodation & approximate room dimensions:

- Omar 'Middleton' Park Home 2025
- Entrance Hall
- Kitchen/Diner: A bright & airy living room with vaulted ceiling with LED lighting. Double doors to garden. Ample space for dining suite. Good range of floor and wall cupboards. Built-in oven, hob & cooker hood. Integrated fridge/freezer & washing machine. Cupboard housing gas fired combination boiler.
- Bedroom 1: Built-in wardrobes.
- Bedroom 2: Fitted wardrobe.
- bathroom: Panelled bath with shower over. Vanity wash basin & WC. Chrome heated towel rail.
- Gas Central Heating & PVCu Double-Glazing
- Parking on Plot.
- Private Garden. Ashgard Garden Shed.
- Age Restriction 45+. Pets considered.
- Stylish Interior Design—Fully Furnished

Stylish Interior & Fully Furnished



Pitch Fee: approx £319.02 per month including water
Subject to Annual Review
Council Tax Band: 'A' Tenure: 1983 Mobile Homes Act Agreement

Price £199,950

VIEWING STRICTLY BY APPOINTMENT WITH THE VENDOR'S AGENT Dorset Park Homes 01202 877511

IMPORTANT NOTE: These particulars are believed to be correct but their accuracy is not guaranteed. They do not form part of any contract. Nothing in these particulars shall be deemed to be a statement that the property is in good structural condition or otherwise, nor that any of the services, appliances, equipment or facilities are in good working order or have been tested. Purchasers should satisfy themselves on such matters prior to purchase Ref.W04872

The recommended specialist in Park Home sales
Proprietor: Simon Dixon

