

**Head Office:**  
Dixon Kelley Estate Agents  
1 Penn Court  
Station Road, West Moors  
Dorset. BH22 0JJ

**Telephone: 01202 877511**

# DORSET PARK HOMES

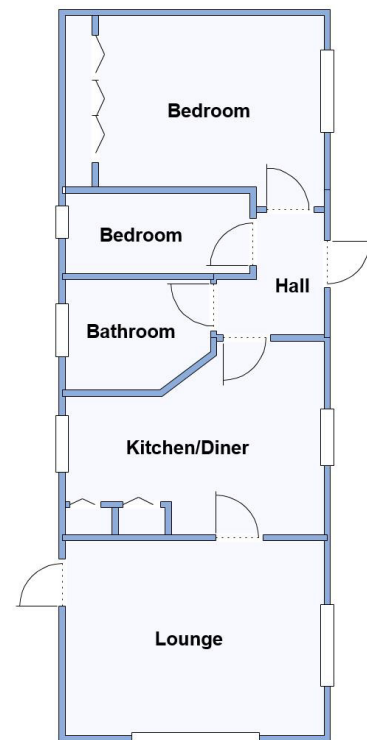
**DRAFT**

[www.dorsetparkhomes.com](http://www.dorsetparkhomes.com)

**74 Stour Park, New Road, Bournemouth, Dorset. BH10 7DE**



**Bright Park Home with Garden & Garage**



This drawing has been prepared for diagrammatic purpose only. Not to scale

**2 Bedroom Park Home approx 38' x 14'**

**Accommodation & approximate room dimensions:**

- Omar Park Home circa 2005
- Entrance Hall
- Kitchen/Diner: approx 13'7" x 10'3" max. Range of base & wall units. Built-in oven, hob & cooker hood. Space for washing machine & tall fridge/freezer. Cupboard housing combination gas boiler.
- Lounge: approx 13'7" x 16'4". Feature fireplace. 2 Bay windows. Door to garden.
- Bedroom 1: approx 11'11" x 9'. Fitted wardrobes.
- Bedroom 2: approx 9'8" x 4'3". Fitted wardrobe.
- Bathroom: Panelled bath with mixer tap & shower attachment. Pedestal wash basin & WC.
- Gas Central Heating & PVCu Double-Glazing
- New Carpets & Vinyl Flooring
- Garage: Up & over door & side door. Power & light.
- Private Patio Garden with sunny aspect. Outside tap
- Age restriction 60+. No Pets
- Well maintained Residential Park close to amenities & with easy access to Bournemouth & Poole.
- No Chain!

## Close to Amenities



Kitchen/Diner



Lounge



Bathroom



Private Garden & GARAGE

**Price £140,000**

**VIEWING STRICTLY BY APPOINTMENT WITH THE VENDOR'S AGENT Dorset Park Homes 01202 877511**

**IMPORTANT NOTE:** These particulars are believed to be correct but their accuracy is not guaranteed. They do not form part of any contract. Nothing in these particulars shall be deemed to be a statement that the property is in good structural condition or otherwise, nor that any of the services, appliances, equipment or facilities are in good working order or have been tested. Purchasers should satisfy themselves on such matters prior to purchase Ref.W05114

**Pitch Fee: Approx £215.60 per month plus £9 Water per month**  
**Subject to Annual Review**  
**Council Tax Band: 'A' Tenure: 1983 Mobile Homes Act Agreement**

*The recommended specialist in Park Home sales*  
Proprietor: Simon Dixon

