

Head Office:

1 Penn Court  
Station Road  
West Moors  
Dorset  
BH22 0JJ

**Tel: 01202 877511**

Email: [info@dorsetparkhomes.com](mailto:info@dorsetparkhomes.com)

# DORSET PARK HOMES



## Fillybrook Fields



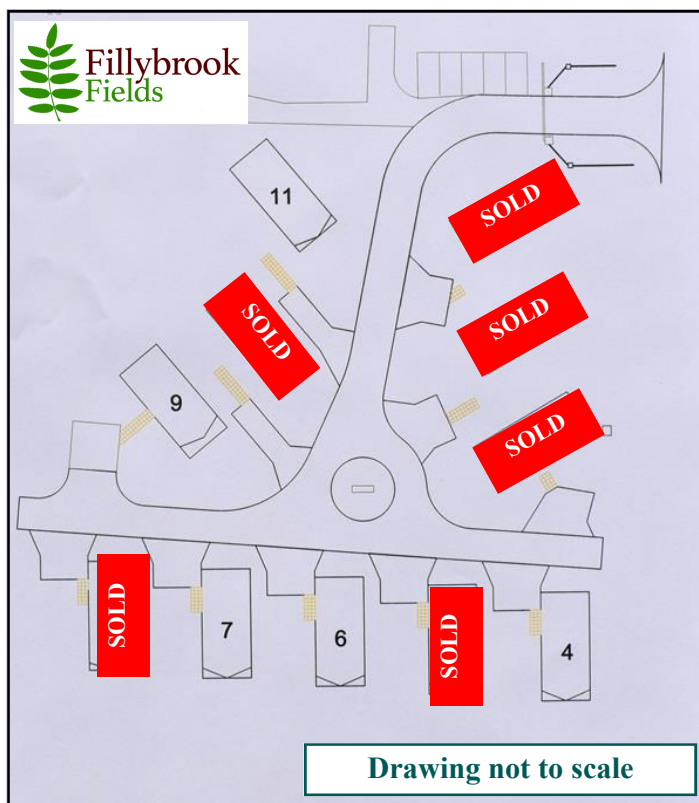
**A Collection of 11 Luxury Park Homes  
on a New Exclusive Residential Park**

# **Fillybrook Fields** A small, Gated Residential Development

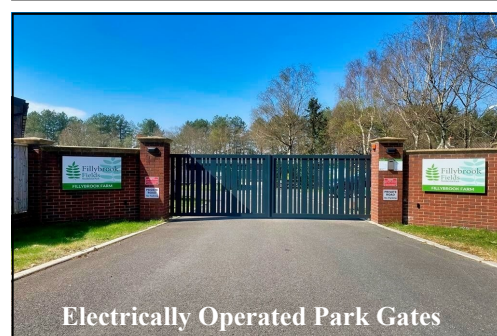
Set between the thriving market towns of Christchurch & Ringwood, this exclusive Residential Park Home development is privately run with the park owner living close by, whose ambition is to have one of the very best parks in Dorset for the over 50's.

As each home arrives, this small gated development will simply get better and better, ending up with 11 high quality Park Homes each having a spacious, fenced plot, with the option of a maintenance free deck system. All plots have 'on-plot' parking for 2 cars and ample visitor parking has been allocated. Plots 4—8 have a wonderful outlook over 'greenbelt' fields and the Park Home designs will take full advantage of this special feature.

- **Full Residential Licence—essential for all year living**
- **Pet Friendly—simple conditions apply—please enquire for more information**
- **Parking—'On-Plot' for 2 cars—no commercial vehicles**
- **Utilities: Mains Water & Electricity—LPG Gas supplied by Fillybrook Fields—Individually metered, not for profit**
- **Internet Access: BT 'Openreach' is ready to connect to each property**
- **Council Tax Band: 'B'**
- **Age Restriction 50 plus: Visitors under the age restriction can come to visit for days out & short holidays**
- **Pitch Fee £240 per month: Including sewerage, park lighting, electric gates, maintenance of communal areas**



**Fillybrook Fields  
Matchams Lane  
Hurn  
Christchurch  
Dorset. BH23 6AW**



Electrically Operated Park Gates



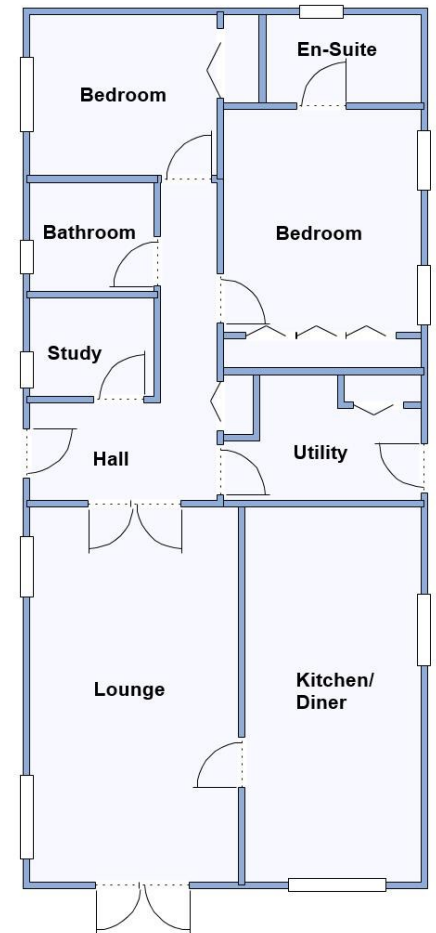
A five star Residential high quality development, setting the standard for Park Home developments. With the New Forest on one side and the stunning Dorset coast the other, Fillybrook Fields occupies an ideal location. All homes will be energy efficient, come with an outstanding specification and at this early opportunity, bespoke homes may be catered for.

Various Park Home sizes are available, all homes are built to residential British standard BS3632, ensuring quality control and build specification and will have a 10 year structural warranty, for peace of mind.

## Viewing by Appointment Only

# Telephone: 01202 877511





**Plot 4**

**Prestige 'Majestic'  
45' x 20'**

**Price: £325,000**

**Kitchen/Diner: approx 18'11" x 8'  
Utility Room: approx 9'2" x 5'  
Lounge: approx 18'11" x 10'7"  
Study: approx 6'6" x 5'  
Bedroom 1: approx 11'4" x 9'6"  
Plus fitted wardrobes  
Bedroom 2: approx 9'6" x 9'1"**

- Hall with useful storage cupboard
- Superb Kitchen/Diner with integrated appliances
- Utility Room with integrated appliances
- Large Lounge with feature fireplace & double doors to deck
- Study with fitted desk unit
- 2 Double Bedrooms (Both with fitted wardrobes)
- En-Suite Shower Room
- Luxury Bathroom
- Gas Central Heating & PVCU Double-Glazing
- Parking on Plot
- 'Wrap Round' Deck approx 450 sq ft with glass balustrade
- **Available Now!**

This drawing has been prepared for diagrammatic purposes only. Not to scale

## Stylish Interior Design & Fully Furnished



Quality Kitchen/Diner



Field View Plot with Large Deck

**IMPORTANT NOTE:** These particulars are believed to be correct but their accuracy is not guaranteed. They do not form part of any contract. Nothing in these particulars shall be deemed to be a statement that the property is in good structural condition or otherwise, nor that any of the services, appliances, equipment or facilities are in good working order or have been tested. Purchasers should satisfy themselves on such matters prior to purchase.