

**Head Office:**  
Dixon Kelley Estate Agents  
1 Penn Court  
Station Road, West Moors  
Dorset. BH22 0JJ

**Telephone: 01202 877511**

# DORSET PARK HOMES

**DRAFT**

[www.dorsetparkhomes.com](http://www.dorsetparkhomes.com)

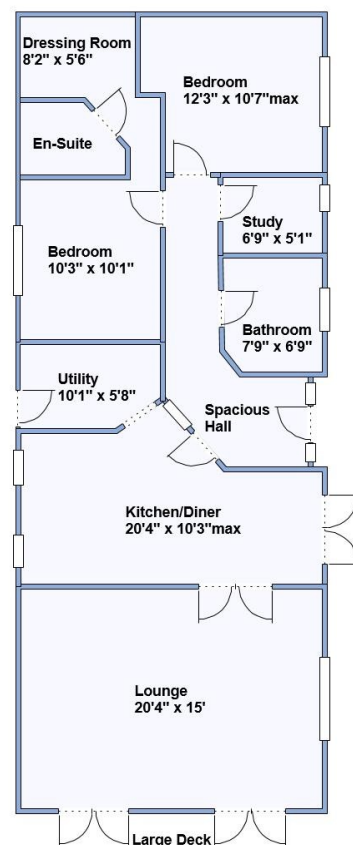
**5 White Horse Park, Osmington, Weymouth. DT3 6ED**

High quality recently developed Residential Park of only 17 homes



Omar 'Heritage' Park Home 55' x 22' manufactured 2020

**Exceptional Park Home in 'Show Home' Condition!**

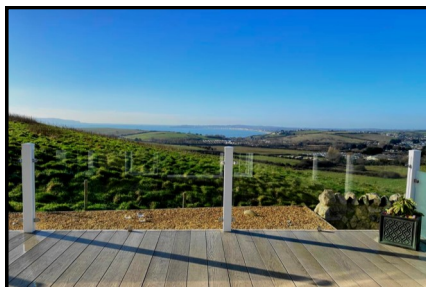


This drawing has been prepared for diagrammatic purpose only. Not to scale

## Approximate room dimensions & brief description:

- Spacious Entrance Hall
- Kitchen/Diner: approx 20'4" x 10'3"max. Superb kitchen with integrated dishwasher. Smeg range style cooker with induction hob & Smeg American style fridge/freezer. Granite worktops. Sky lights & double doors to garden.
- Utility Room: approx 10'1" x 5'8". Integrated washer/dryer & high level microwave. Boiler cupboard.
- Lounge: approx 20'4" x 15'. A stunning room 2 sets of doors leading to Large Sun Terrace. **Outstanding panoramic sea & rural views.**
- Study: approx 6'9" x 5'. Fitted desk & storage units.
- Bedroom 1: approx 10'3" x 10'1" Plus a custom fitted Dressing Room: 8'2 x 5'6" with Sky Light.
- Luxury En-Suite Shower Room
- Bedroom 2: approx 12'4" x 10'7"max. Bay window.
- Bathroom: A stunning bathroom with Slipper Bath, Vanity wash basin & WC.
- Economical Air Source Heating & Double-Glazing
- Vaulted ceilings with LED Lighting
- Large Sun Terrace with Panoramic Views.
- Substantial Shed with power & light.
- Ample 'On-Plot' Parking
- Age Restriction 45+ Dogs Considered

## Wonderful Sea & Rural Views



**Pitch Fee: approx £69.45 per week including sewerage**  
**Subject to Annual Review**

**Council Tax Band: 'A'**

**Tenure: 1983 Mobile Homes Act Agreement**

**Price £299,995**

**VIEWING STRICTLY BY APPOINTMENT WITH THE VENDOR'S AGENT Dorset Park Homes 01202 877511**

**IMPORTANT NOTE:** These particulars are believed to be correct but their accuracy is not guaranteed. They do not form part of any contract. Nothing in these particulars shall be deemed to be a statement that the property is in good structural condition or otherwise, nor that any of the services, appliances, equipment or facilities are in good working order or have been tested. Purchasers should satisfy themselves on such matters prior to purchase Ref.W04963

*The recommended specialist in Park Home sales*  
Proprietor: Simon Dixon







Beautiful Lounge



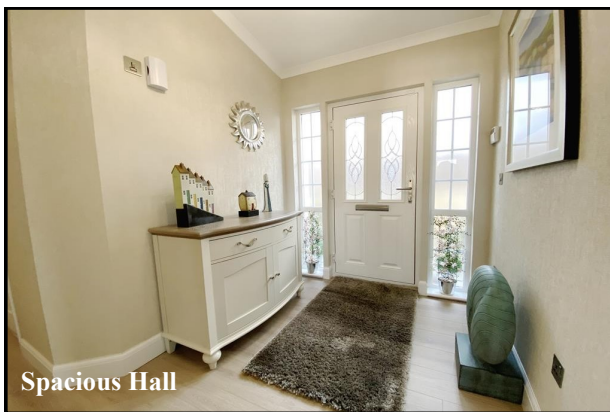
Dining Area



Kitchen/Diner



Kitchen/Diner



Spacious Hall



Study

On entering this beautiful home, you get a sense that this home is something special. The current owners maintain & present this exceptional Park Home in pristine condition inside & out. Light floods through this home enhanced with sky-light windows set into the vaulted ceilings. The fixtures & fittings are of a very high standard & the large terrace with glass balustrade is of top quality. The home is located in a coastal position on this small, recently developed Residential Park and has enviable sea & rural views.

Viewing is a must!



Wonderful Coastal Position

Wonderful Rural Setting close to Jurassic Coast



Bedroom 1



En-Suite



Dressing Room