

Head Office:
Dixon Kelley Estate Agents
1 Penn Court
Station Road, West Moors
Dorset. BH22 0JJ

Telephone: 01202 877511

DORSET PARK HOMES

DRAFT

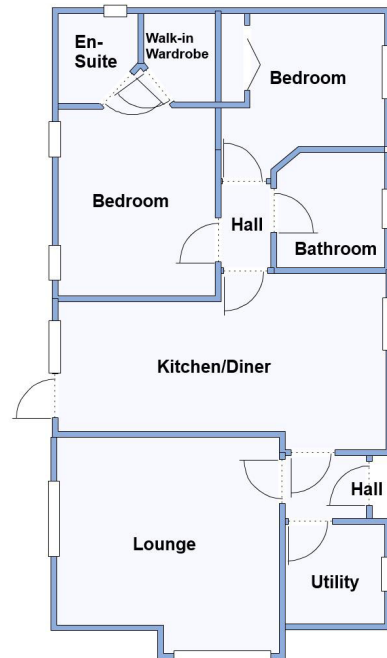
www.dorsetparkhomes.com

Otter View, Stubbings Meadow, The Bridges, Ringwood. BH24 1EB

Stately Albion—'Woburn' ready for early occupation!



Exceptional High Quality Finish



This drawing has been prepared for diagrammatic purpose only. Not to scale.

2-Bedroom Park Home - approx 36' x 20'

Accommodation & approximate room dimensions:

- Entrance Hall
- Lounge: approx 12'9" x 11'9". Feature fireplace & full height windows with pleasant outlook.
- Kitchen/Diner: approx 18'6" x 9'4" max. Range of floor & wall cupboards. Built-in high level oven and hob. Integrated fridge/freezer & dishwasher. Space for dining suite with door to garden.
- Utility Room: approx 5'8" x 5'8". Integrated washing machine. Cupboard housing gas boiler.
- Inner Hall
- Bedroom 1: approx 10'6" x 8'9" Plus walk-in wardrobe.
- Luxury En-Suite Shower Room
- Bedroom 2: approx 9'4" x 7'7". Fitted wardrobe.
- Luxury Bathroom
- Gas Central Heating & PVCu Double-Glazing
- Stylish Interior & Fully Furnished
- Delightful Landscaped Garden & new Metal Shed.
- Parking on Plot.
- Age Restriction 50+ Pets Considered
- Small, well maintained Residential Park in unique riverside location, walking distance of Ringwood

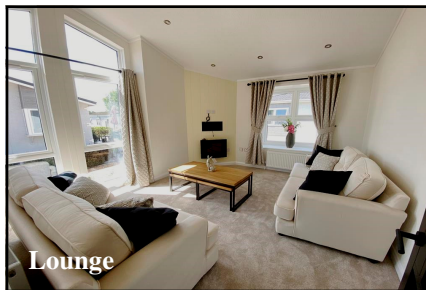
Walking Distance of Ringwood Town Centre



Kitchen/Diner



Kitchen/Diner



Lounge



Parking on Plot

Price Guide: £300,000

VIEWING STRICTLY BY APPOINTMENT WITH THE VENDOR'S AGENT Dorset Park Homes 01202 877511

IMPORTANT NOTE: These particulars are believed to be correct but their accuracy is not guaranteed. They do not form part of any contract. Nothing in these particulars shall be deemed to be a statement that the property is in good structural condition or otherwise, nor that any of the services, appliances, equipment or facilities are in good working order or have been tested. Purchasers should satisfy themselves on such matters prior to purchase Ref.W05081

Pitch Fee: approx £220 per month

Subject to Annual Review

Council Tax Band: 'A'

Tenure: 1983 Mobile Homes Act Agreement

The recommended specialist in Park Home sales
Proprietor: Simon Dixon

