

Head Office:
Dixon Kelley Estate Agents
1 Penn Court
Station Road, West Moors
Dorset. BH22 0JJ

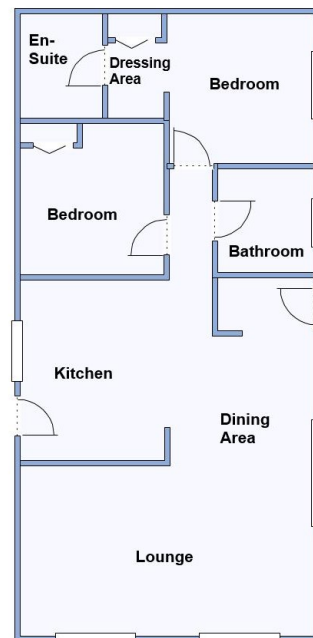
DORSET PARK HOMES

DRAFT

www.dorsetparkhomes.com

Telephone: 01202 877511

28 Cherry Blossom Drive, New Forest Glades, Hurn, Christchurch. BH23 6BY



This drawing has been prepared for diagrammatic purpose only. Not to scale

Beautifully Presented Park Home on 'Pet Friendly' Park

2 Bedroom Park Home approx 40' x 20'

Accommodation & approximate room dimensions:

- Omar 'Newmarket' circa 2022
- Entrance: Cloaks cupboard.
- Kitchen approx 11'3" x 9'2" Range of modern floor and wall cupboards. Built-in high-level double oven, gas hob & cooker hood. Integrated fridge/freezer, washing machine & dishwasher. Cupboard housing combination gas boiler. Door to large side decking.
- Lounge/Dining Room: approx 22'7 x 19' max. Feature electric fireplace. Double doors onto decking area. Ample space for large lounge & dining suite. Vaulted ceiling.
- Inner Hall
- Bedroom 1: approx 9'5" x 9'2". Large built-in wardrobes.
- En-Suite Shower Room: Corner shower cubicle. Vanity wash basin & WC. Heated towel rail.
- Bedroom 2: approx 9'6" x 9'2". Built-in wardrobe.
- Bathroom: Panelled bath with shower attachment. Vanity wash basin & WC. Heated Towel Rail.
- Gas Central Heating (system untested)
- Parking on Plot for 2 cars
- Delightful Garden mainly laid to grass & decking. Garden Shed
- Age Restriction 45+ Pets Considered
- Secure Gated Entrance onto site.

Delightful Decking Areas



Pitch Fee: approx £287.61 per cal month
Subject to Annual Review
Council Tax Band: 'A' Tenure: 1983 Mobile Homes Act Agreement

Price £240,000

VIEWING STRICTLY BY APPOINTMENT WITH THE VENDOR'S AGENT Dorset Park Homes 01202 877511

IMPORTANT NOTE: These particulars are believed to be correct but their accuracy is not guaranteed. They do not form part of any contract. Nothing in these particulars shall be deemed to be a statement that the property is in good structural condition or otherwise, nor that any of the services, appliances, equipment or facilities are in good working order or have been tested. Purchasers should satisfy themselves on such matters prior to purchase Ref.W05135

The recommended specialist in Park Home sales
Proprietor: Simon Dixon

