











### About the property

Tucked away in a private road just moments from Northfields tube station, this quiet, leafy street is the perfect hideaway after a busy day in the city.

This one bedroom flat on the first floor is cosy and quiet. You'll enjoy the best of Northfields on your own terms, or you can stay indoors and enjoy relaxing in your spacious reception or cooking in the well-equipped kitchen!

The flat itself offers bright living space with a large double bedroom with ample storage. The bathroom is modern and contemporary and the kitchen a great size for single occupant or a couple.

You will be spoilt for choice of cafes, bars, restaurants and independent shops on Northfields Avenue, as well as the Piccadilly Line with direct access into Heathrow Airport and the city.



### Key features

- Lovely First Floor One-Bed Flat
- Moments from Northfields Avenue
- Excellent Transport Links
- Abundance of Local Amenities
- Great Parks Nearby
- Furnished / Unfurnished
- Generous Reception Room
- Parking Available
- Well-Equipped Separate Kitchen
- Available January 2026

### Material information

- Council Tax - **Band C**
- Guide Price - **£1,750 PM**



**PAUL LESLIE**  
 Director  
 020 3488 6445  
 07738 401 822  
 paul@leslieandcompanyuk.com

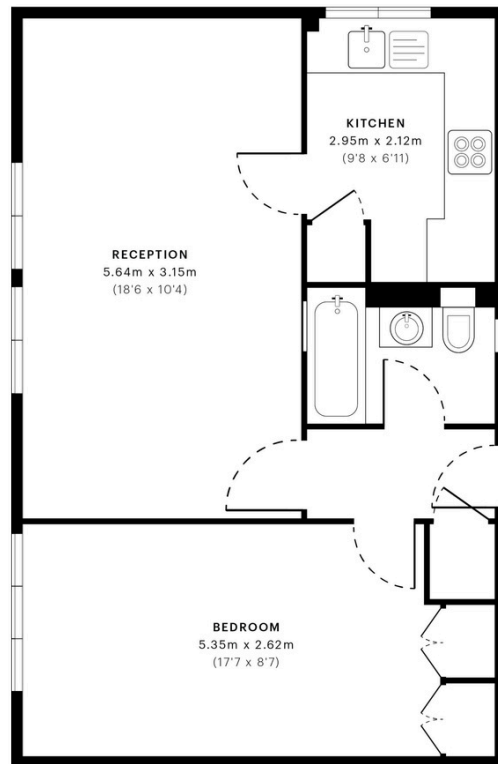


Littlewood Close, W13

CAPTURE DATE 14/12/2022 LASER SCAN POINTS 29,679,567

GROSS INTERNAL AREA

44.46 sqm / 478.56 sqft



— First Floor

GROSS INTERNAL AREA (GIA)  
The footprint of the property  
44.46 sqm / 478.56 sqft

NET INTERNAL AREA (NIA)  
Excludes walls and external features  
Includes voids and external headroom  
42.75 sqm / 460.16 sqft

EXTERNAL STRUCTURAL FEATURES  
Balconies, terraces, verandas etc.  
0.00 sqm / 0.00 sqft

RESTRICTED ACCESS HEIGHT  
Limited use area under 1.5m  
0.07 sqm / 0.75 sqft



Spec Verified floor plans are produced in accordance with:  
 Royal Institution of Chartered Surveyors' Property Measurement Standards.  
 Plans and gardens are illustrative only and excluded from all area calculations.  
 Due to rounding, numbers may not add up precisely.

SPM 10 RESIDENTIAL: 45.41 sqm / 488.79 sqft  
 SPM 10 RESIDENTIAL: 43.89 sqm / 470.43 sqft

